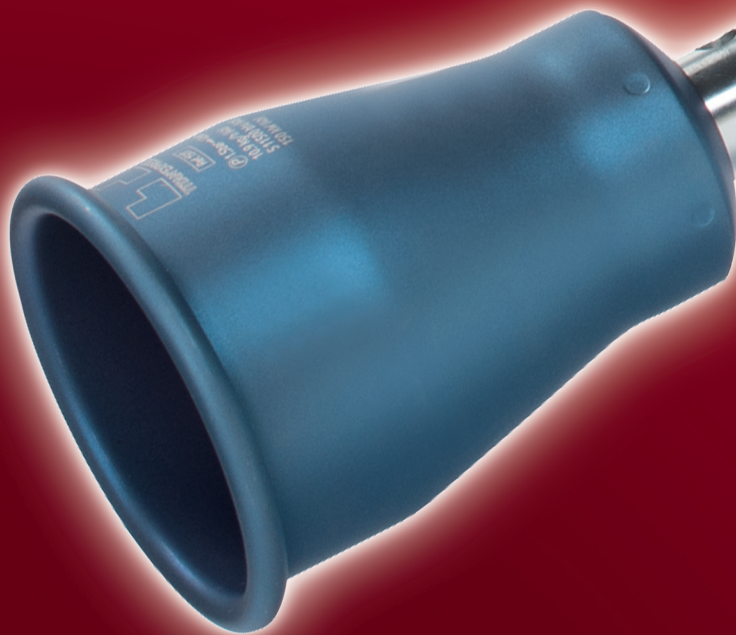
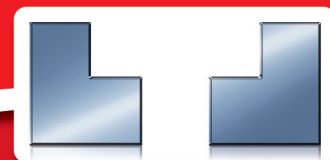


EXPRESS
depuis 1905

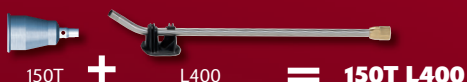


TITAN'EXPRESS





FR Composez votre chalumeau.
 GB Make up your own torch.
 DE Erstellen Sie Ihre eigenen Brenner.
 IT Comporre il proprio cannello.
 ES Componer su propia lanza.
 SE Skapa din egen brännare.
 DK Opret din egen brænder.
 NL Stel uw eigen brander same.
 PL Stwórz własny palnik.
 NO Sett sammen din egen sveisebrenner.
 RU Сделайте Вашу собственную горелку.



4740

FR Pied en polyamide chargé de fibre de verre.
 GB Twist lock stand in glass-fibre-reinforced polyamide.
 DE Fuß anpassungsfähig ohne Werkzeug, aus Polyamid glasfaserverstärkt, für Anwämbrenner.
 IT Piede in poliammide caricato di fibradi di vetro.
 ES Pie en poliamida cargado de fibra de vidrio.
 SE Stödfot i glasfiberarmerad polyamid.
 DK Support af glasfiberforstærket polyamid.
 NL Manueel verstelbaar voetstuk in polyamide/glasvezel voor brander.
 PL Podnózek z poliamidu wzmocnionego włóknem szklanym.
 NO Sokkel i glassfiberforsterket polyamid.
 RU Ножка из полиамида усиленного о стекловолокном.



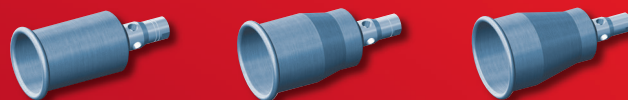
FR N'utiliser que dans des locaux suffisamment aérés.
 GB Only use in sufficiently ventilated areas.
 DE Nur in ausreichend belüfteten Bereichen verwenden.
 IT Utilizzare solo in locali ben aerati.
 ES Sólo utilizar en locales suficientemente ventilados.
 SE Använd endast i lokaler med tillräcklig ventilation.
 DK Må kun anvendes i godt ventilerede lokaler.
 NL Uitsluitend gebruiken in goed geventileerde ruimten.
 PL Używać tylko w dobrze wietrzonych pomieszczeniach.
 NO Må kun brukes i tilstrekkelig luftede lokaler.
 RU Используйте только в хорошо проветриваемых помещениях.

Guilbert Express

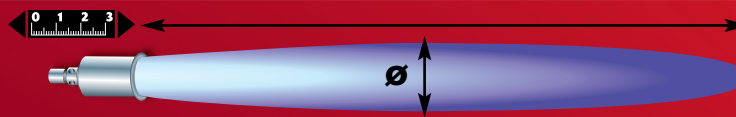
33 avenue du Maréchal de Lattre de Tassigny
 F - 94127 FONTENAY-SOUS-BOIS Cedex
 info@express.fr

www.express.fr

32990 m



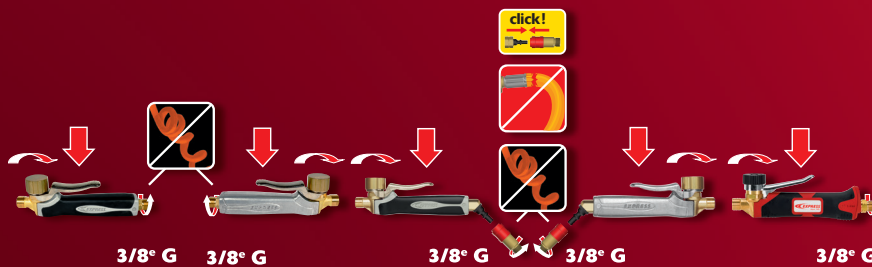
	50 T		100 T		150 T	
Ø	50 mm 50 MM	1.97 in	60 mm 60 MM	2.36 in	70 mm 70 MM	2.75 in
⚖ (g) (r)	90,5		92,5		122	
Propan пропан	1,5 - 4 bar 1,5 - 4 бар	21 - 58 psi	1,5 - 4 bar 1,5 - 4 бар	21 - 58 psi	1,5 - 4 bar 1,5 - 4 бар	21 - 58 psi
g/h (4 bar) r/h (4 бар)	3 910		7 390		10 860	
kW (4 bar) кВт (4 бар)	50		100		150	
BTU/h (58 psi)	171 000		341 000		511 500	



	50 T		100 T		150 T	
0 1 2 3	650 mm 650 MM	25.59 in	800 mm 800 MM	31.50 in	1000 mm 1000 MM	39.37 in
Ø	110 mm 110 MM	4.33 in	120 mm 120 MM	4.72 in	130 mm 130 MM	5.12 in



	L 600		L 400		L 200	
0 1 2 3	600 mm 600 MM	23.62 in	400 mm 400 MM	15.75 in	130 mm 130 MM	5.12 in
⚖ (g) (r)	252		196.5		122	



620 plastic пластик	640 metal металл	620CR plastic пластик	640CR metal металл	650 plastic пластик
-------------------------------	----------------------------	---------------------------------	------------------------------	-------------------------------



	963/5		963/10		963/20S	
0 1 2 3	4,75 m 4,75 M	15 ft	10 m 10 M	33 ft	20 m 20 M	65,50 ft



684	686 ≤ 50 kW 50 кВт
4b	2b > 4b