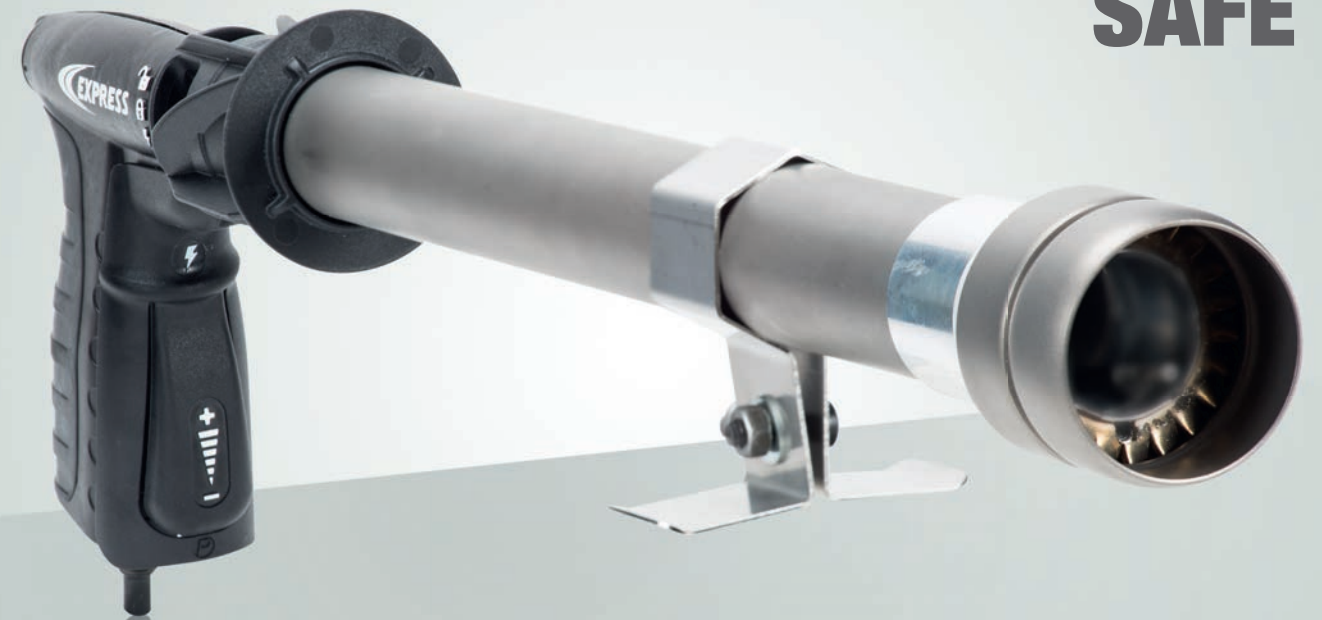




Guilbert Express • October 2015 • RCS Créteil 572 056 812. Actual products may differ from photographs. les temps modernes™

POWERFUL
PRECISE
FAST
SAFE

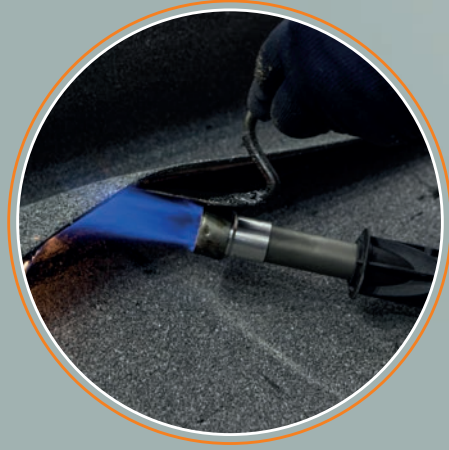


Guilbert Express
+33 (0) 825 800 251
www.guilbert-express.net

RAPTOR

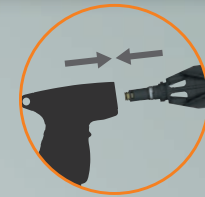
GET TO WORK STRAIGHT AWAY

- single-click hose connection, thanks to the **fast connector**,
- readily available flame thanks to **synchronised piezo ignition**, with a single press on the trigger,
- **interchangeable burners, with no tools needed**,
- easy **self-maintenance** : changing the trigger/piezo-ignition also requires no tools.



PIEZO
SYNCHRONISED
PIEZO IGNITION

Cat. No. 1045



**INTERCHANGEABLE BURNERS,
WITH NO TOOLS NEEDED**



FAST CONNECTOR

USER COMFORT & SAFETY

- Three-position marking: changing burner, storage, ignition,
- safe ignition with low gas flow,
- **safety handle** (the torch switches off when the operator releases the handle),
- **very lightweight** (about 500 g), to reduce the risk of musculoskeletal disorders (MSDs),
- **attenuated sound level** (< 81 dBA),
- a lightweight titanium burner, which can withstand very high temperatures, impacts and erosion.



ENVIRONMENTAL APPROACH

The safety-handle that equips the RAPTOR torch contributes to a significant reduction in gas consumption and therefore:

- reduces CO2 emissions,
- **avoids the risk of causing accidental fires** on worksites and related harm to people and property.

POWER & PRECISION

Offering a high level of performance with its targeted flame, the **RAPTOR torch** has a range of burners from 30 to 160 kW.

The Raptor makes it possible to perform jobs that require a high-precision flame.



CASE
Cat. No. 1027



CASE
Cat. No. 1029



Torch with scraper
for bitumen

Cat. No. 1001

Cat. No. 1030

Cat. No. 1070

Cat. No. 1090

Cat. No. 1150

	Cat. No. 1030	Cat. No. 1070	Cat. No. 1090	Cat. No. 1150	Cat. No. 1001
Ø (mm/in)	35 / 1.38	41 / 1.61	50 / 1.97	50 / 1.97	35 / 1.38
g	158	170	210	325	384
Kg/h (4 bar/58 psi)	2.58	5.22	6.77	11.77	2.58
kW/BTU/h (4 bar/58 psi)	30 / 102400	70 / 245800	90 / 319000	160 / 553000	30 / 102400
dBA	77	75	81	81	77



	Cat. No. 1030	Cat. No. 1070	Cat. No. 1090	Cat. No. 1150
Length (mm/in)	250 / 9.84	350 / 13.78	350 / 13.78	1100 / 43.31
Ø (mm/in)	45 / 1.77	55 / 2.17	62 / 2.56	50 / 1.97